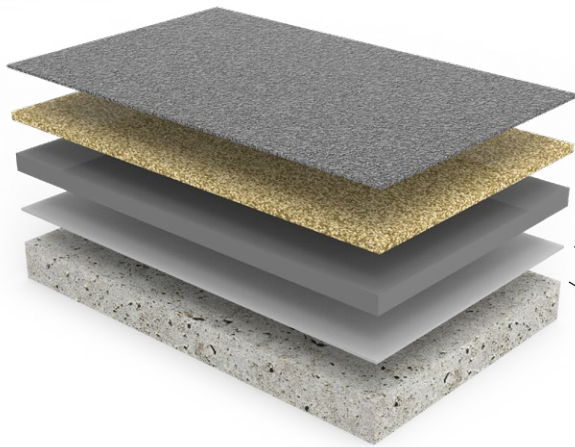


POLY-CRETE[®] MDB



- Topcoat** - Pigmented Topcoat (Poly-Crete Color-Fast, Poly-Crete TF Plus, Dur-A-Glaze Novolac, Accelera [only over flintshot], or Shop Floor with Armor Top)
- Quartz Broadcast** - Broadcast of Flintshot or Q-Rok Quartz Aggregate into the Poly-Crete MD
- Body Coat** - Pigmented Poly-Crete MD
- Primer** - (optional) Pigmented Poly-Crete TF Plus (only required with F60 Broadcast or if the substrate is very porous)
- Prepared Substrate** - Concrete Surface Profile (CSP) of 3-4

SYSTEM OVERVIEW

POLY-CRETE MDB is a 100% solids, seamless 1/4" cementitious-urethane flooring system with a natural quartz aggregate broadcast, providing a slip-resistant finish. The body coat is resistant to impact, thermal shock, and is moisture mitigating which can eliminate the use of a primer in most environments, while topcoat options offer a UV stable - chemical and abrasion resistant finish.

FEATURES & BENEFITS

• Impact Resistant

A 1/4" build that is extremely tough in high use environments

• Moisture Mitigating

Installs in more environments, including those with high moisture levels up to 99% RH

• Non Slip

Texture from the aggregate broadcast aids in a safer floor, even when wet

• Thermal Shock Resistant

Usable in harsh environments with high thermal cycling or rapid changes in temperature

COMMON USE SITES

- Kitchens
- Warehouses
- High Traffic Areas
- Storage
- Manufacturing
- Machine Shops
- Tool Cribs
- Food Processing
- Breweries/Distilleries



COLORS

Available in standard solid color topcoats. For a full list of available colors visit DUR-A-FLEX.COM.



BLUE*



GREY



CHARCOAL



RED



DARK GREY



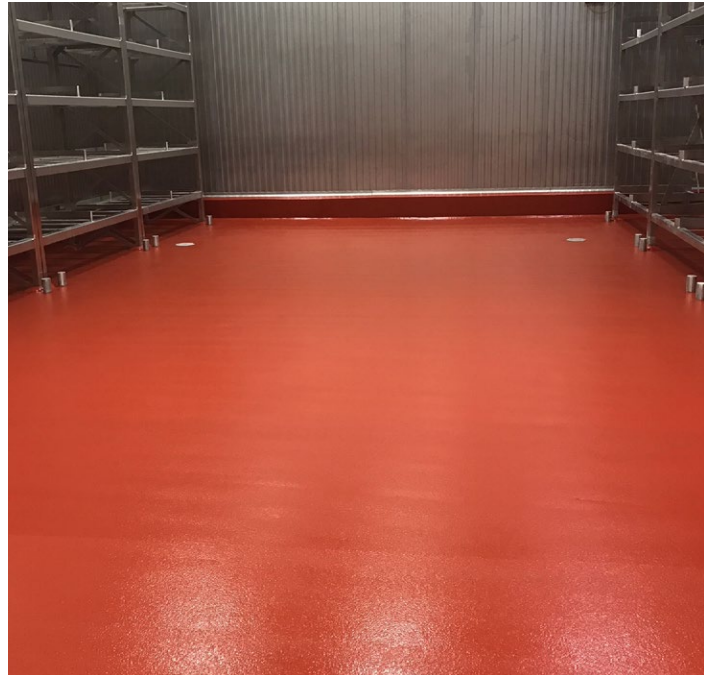
GREEN*



CHESTNUT

Poly-Crete MD, MDB, SLB, HF systems and Poly-Crete TF Plus topcoat feature a matte finish. For UV stability use with one of these topcoats: Accelera, Shop Floor, Armor Top, and Color-Fast.

*Poly-Crete Color-Fast in these colors require a grout coat of Poly-Crete TF Plus to ensure consistent color.



IMPORTANT!

Before using DUR-A-FLEX products, read and understand its accompanying Safety Data Sheet & Application Instructions for important safety information.

STANDARD TERMS AND CONDITIONS OF SALE, INCLUDING STANDARD WARRANTY APPLY - VISIT DUR-A-FLEX.COM FOR THE LATEST VERSION

v1



DUR-A-FLEX
INNOVATION FROM THE FLOOR UP

CONNECTICUT | GEORGIA | ILLINOIS | CALIFORNIA
TOLL FREE 800-253-3539 | 860-528-9838 | DUR-A-FLEX.COM